

On the One Dimensional “Learning from Neighbours” Model

Antar Bandyopadhyay, * Rahul Roy, †‡
Anish Sarkar §

Theoretical Statistics and Mathematics Unit
Indian Statistical Institute, New Delhi
7 S. J. S. Sansanwal Marg
New Delhi 110016
INDIA

Abstract

We consider a model of a discrete time “interacting particle system” on the integer line where infinitely many changes are allowed at each instance of time. We describe the model using chameleons of two different colours, viz., red (R) and blue (B). At each instance of time each chameleon performs an independent but identical coin toss experiment with probability α to decide whether to change its colour or not. If the coin lands head then the creature retains its colour (this is to be interpreted as a “success”), otherwise it observes the colours and coin tosses of its two nearest neighbours and changes its colour only if, among its neighbours and including itself, the proportion of successes of the other colour is larger than the proportion of successes of its own colour. This produces a Markov chain with infinite state space $\{R, B\}^{\mathbb{Z}}$. This model was studied by Chatterjee and Xu [5] in the context of diffusion of technologies in a set-up of myopic, memoryless agents. In their work they assume different success probabilities of coin

*E-Mail: antar@isid.ac.in URL: <http://www.isid.ac.in/~antar>

†E-Mail: rahul@isid.ac.in URL: <http://www.isid.ac.in/~rahul>

‡Supported by a grant from Department of Science and Technology, Government of India

§E-mail: anish@isid.ac.in URL: <http://www.isid.ac.in/~anish>

tosses according to the colour of the chameleon. In this work we consider the symmetric case where the success probability, α , is the same irrespective of the colour of the chameleon. We show that starting from any initial translation invariant distribution of colours the Markov chain converges to a limit of a single colour, i.e., even at the symmetric case there is no "coexistence" of the two colours at the limit. As a corollary we also characterize the set of all translation invariant stationary laws of this Markov chain. Moreover we show that starting with an i.i.d. colour distribution with density $p \in [0, 1]$ of one colour (say red), the limiting distribution is all red with probability $\pi(\alpha, p)$ which is continuous in p and for p "small" $\pi(p) > p$. The last result can be interpreted as the model favours the "underdog".

Key words: Coexistence, Learning from neighbours, Markov chain, Random walk, Stationary distribution.

AMS 2000 Subject Classification: Primary 60J10, 60K35; Secondary: 60C05, 62E10, 90B15, 91D30.

Submitted to EJP on January 14, 2010, final version accepted September 19, 2010.

1 Introduction and Main Results

1.1 Background and Motivation

Chatterjee and Xu [5] introduced a model of particle systems consisting of a countable number of particles of two types, each particle being situated on integer points of the integer line. The type of a particle evolves with time depending on the behaviour of the neighbouring particles. This model, as Chatterjee and Xu explain is

“... a problem of diffusion of technology, where one technology is better than the other and agents imitate better technologies among their neighbours.”

The model above is part of a large class of models studied by economists over the last decade on ‘social learning’. Ellison and Fudenberg [6] introduced the notion of social learning – they studied how the speed of learning and the ultimate determination of market equilibrium is affected by social networks and other institutions governing communication between market participants. Bala and Goyal [2] studied a model where “... individuals periodically make decisions concerning the continuation of existing information links and the formation of new information links, with their cohorts ... (based on) ... the costs of forming and maintaining links against the potential rewards from doing so”. They studied the long run behaviour of this process. Much of the work on this was inspired by an earlier paper Bala and Goyal [1] where the learning was from neighbours and they showed “... local learning ensures that all agents obtain the same payoffs in the long run”. Banerjee and Fudenberg [3] also obtained similar results of a single ‘long-run outcome’ when the decision making of an individual is based on a larger set of agents.

Here we consider the model studied by Chatterjee and Xu [5]. Instead of particles or technologies we describe the model with chameleons which can change their colours. Let $G = (V, E)$ be an infinite connected graph which is *locally finite*, i.e., $\deg_G(v) < \infty$ for any vertex $v \in V$. Suppose at every $v \in V$ and at any instance of time t , there is a chameleon $\xi_v(t)$, which is either red (R) or blue (B) in colour. In accordance with its colour it also has either a red coin $C_R(v, t)$ or a blue coin $C_B(v, t)$. The red coin has a probability p_R of success (1) and a probability $1 - p_R$ of failure (0), while the blue coin has a probability p_B of success (1) and a probability $1 - p_B$ of failure (0). The outcome of the coin toss of a chameleon is independent of the outcomes of the coins as well as the colours of the other chameleons. The evolution is governed by the rule described below which is referred as *Rule-I* in [5].

Fix $t \geq 0$ and $v \in V$, let $N_v := \left\{ u \mid \langle v, u \rangle \in E \right\} \cup \{v\}$ be the set of neighbours of the vertex v including itself.

- If $C_{\xi_v(t)}(v, t) = 1$ then $\xi_v(t+1) = \xi_v(t)$, in other words, if the coin toss of the chameleon at v at time t results in a success then it retains its colour.
- If $C_{\xi_v(t)}(v, t) = 0$ then it retains its colour if the *proportion of successes of the coin tosses of the chameleons of its colour in N_v is larger or equal to the proportion of successes of the coin tosses of the chameleons of the other colour in N_v* . Otherwise it switches to the other colour. Here we interpret $0/0$ as 0.

Formally, we have a configuration $\xi(t) \in \{R, B\}^V$ for every $t \geq 0$ and two independent collections $\{C_R(v, t) : v \in V, t \geq 0\}$ and $\{C_B(v, t) : v \in V, t \geq 0\}$ of i.i.d. Bernoulli (p_R) and i.i.d. Bernoulli (p_B) random variables. Let $(\Omega, \mathcal{F}, \mathbb{P})$ be the probability space where all these random variables are defined.

The process ξ_0 starts with some initial distribution \mathbb{P}_0 on $\{R, B\}^V$ and the evolution is governed by the rule above. Let \mathbb{P}_t be the distribution of ξ_t at time t . In this work we are interested in finding the possible limiting distributions π for $(\mathbb{P}_t)_{t \geq 0}$. From the definition it follows that $\{\xi_t : t \geq 0\}$ is a Markov chain with state space $\{R, B\}^V$; thus any limiting distribution π , if it exists, is a stationary distribution of this Markov chain. We also observe that there are two absorbing states for this Markov chain, namely, the configuration of *all reds* and the configuration of *all blues*. Let $\delta_{\mathbf{R}}$ denote the degenerate measure on $\{R, B\}^V$ which assigns mass 1 to the configuration of *all reds*, and similarly $\delta_{\mathbf{B}}$ denote the measure on $\{R, B\}^V$ which assigns mass 1 to the configuration of *all blues*. Chatterjee and Xu [5] studied this model for the one dimensional integer line \mathbb{Z} with nearest neighbour links. They showed that when $(\xi_i(0))_{i \in \mathbb{Z}}$ are i.i.d. with $\mathbb{P}_0(\xi_0(0) = R) = p$ and $\mathbb{P}_0(\xi_0(0) = B) = 1 - p$, for some $p \in (0, 1)$ and $p_R > p_B$

$$\mathbb{P}_t \xrightarrow{\mathbf{w}} \delta_{\mathbf{R}} \text{ as } t \rightarrow \infty. \quad (1)$$

In this work we first present a simpler proof of the above result. However our main interest is the study of the model when $p_R = p_B$, that is, when the success/failure of a coin is “colour-blind”. We call this the symmetric case. The following subsection provides our main results.

1.2 Main Results

We first state the result of Chatterjee and Xu [5] for which we provide a different proof in Section 2.

Theorem 1. *Let $G := \mathbb{Z}$ be the one dimensional integer line with nearest neighbour links and suppose $\{\xi_i(0) : i \in \mathbb{Z}\}$ are i.i.d. with $\mathbb{P}_0(\xi_0(0) = R) = p$ and $\mathbb{P}_0(\xi_0(0) = B) = 1 - p$, for some $p \in (0, 1)$ if $p_R > p_B$, then*

$$\mathbb{P}_t \xrightarrow{\mathbf{w}} \delta_{\mathbf{R}} \text{ as } t \rightarrow \infty. \quad (2)$$

Our main result is for the symmetric case when $p_R = p_B$. For this we have the following result.

Theorem 2. *Let $G := \mathbb{Z}$ with nearest neighbour links and suppose $\{\xi_i(0) : i \in \mathbb{Z}\}$ are i.i.d. with $\mathbb{P}_0(\xi_0(0) = R) = p$ and $\mathbb{P}_0(\xi_0(0) = B) = 1 - p$, for some $p \in (0, 1)$. Assume $p_R = p_B = \alpha \in (0, 1)$. Then, as $t \rightarrow \infty$*

$$\mathbb{P}_t \xrightarrow{\mathbf{w}} \pi(\alpha, p) \delta_{\mathbf{R}} + (1 - \pi(\alpha, p)) \delta_{\mathbf{B}}, \quad (3)$$

where $\pi(\alpha, p) \in [0, 1]$ satisfies the following properties

- (i) For every fixed $\alpha \in (0, 1)$ the function $p \mapsto \pi(\alpha, p)$ is continuous on $[0, 1]$.
- (ii) For any α and $p \in (0, 1)$, $\pi(\alpha, p) = 1 - \pi(\alpha, 1 - p)$. Thus in particular $\pi(\alpha, \frac{1}{2}) = \frac{1}{2}$ for all $\alpha \in (0, 1)$.
- (iii) $p^2 < \pi(\alpha, p) < 2p - p^2$ for all $0 < p < 1$ and $\alpha \in (0, 1)$.
- (iv) For every $\alpha \in (0, 1)$ there exists $\varepsilon \equiv \varepsilon(\alpha) > 0$ such that $\pi(\alpha, p) > p$ for all $0 < p < \varepsilon$.

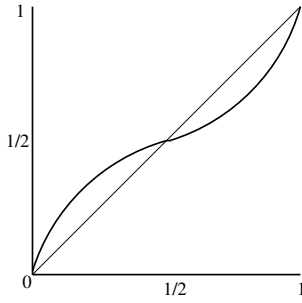


Figure 1: Conjectured Graph of the function $p \mapsto \pi(\alpha, p)$.

Theorem 2 basically says that under the evolution scheme described above if $p_R = p_B = \alpha$ then starting with i.i.d. colours on the integer line the distribution of the colours will converge either to the *all red* or to the *all blue* configuration; thus ruling out the possibility of any *coexistence* of both the colours at the limit. Such a result is expected considering the one dimensionality of the graph \mathbb{Z} . This lack of coexistence on \mathbb{Z} is akin to the situation in many statistical physics models, such as, percolation, Ising model, q -Potts model which do not admit *phase transition* in one dimension [9, 8].

Here it is worth mentioning that it is natural to compare our model to the one dimensional nearest neighbour *threshold voter model*. A closer look reveals that our model has certain intrinsically different aspects than the standard interacting particle system models including threshold voter model with nearest neighbour interactions as described in [10]. On the technical side those models are typically studied in continuous time while ours is discrete in nature and we allow the possibility of infinitely many changes to happen simultaneously at a time instance. In fact there is no “natural” continuous time analogue of this kind of particle system. Moreover unlike in *voter’s model* the change of colour is not determined just by the number of successes of a colour in the neighbourhood but by the proportion of successes. This introduces more local dependency in the model. On more conceptual side it is interesting to note that for our model we get $\pi(\alpha, p) > p$ in a neighbourhood of 0, which can be interpreted as follows:

The model gives an “*advantage to the underdog*”, in the sense that for a fixed $\alpha \in (0, 1)$ if p is “small” then there is still a possibility that the (underdog) red chameleons will survive at the end.

This is different from what one obtains in a threshold voter model where the limiting fraction of reds is same as the initial density of reds.

We believe that this phenomenon of “*advantage given to the underdog*” is true for all $0 < p < 1$ with the caveat that the colour of the underdog is different according as p is smaller or greater than $\frac{1}{2}$. We conjecture that the graph of the function $p \mapsto \pi(\alpha, p)$ is as in Figure 1.2 for every fixed $\alpha \in (0, 1)$.

We would also like to point out that unlike in the voter model there is no simple coalescing branching random walks as a dual process to our model. Our techniques involve a direct computation of probabilities of certain type of cylinder sets leading to the result in Theorem 2.

Finally, we note that the proof of the convergence (3) of Theorem 2 (which is given in Section 4) works as it is, when we start the Markov chain with a *translation invariant* starting distribution. Thus we get the following more general result.

Theorem 3. *Let $\{\xi_i(0) : i \in \mathbb{Z}\}$ be random variables which are translation invariant and let $\mathbf{P}(\xi(0) = R) = p = 1 - \mathbf{P}(\xi_i(0) = B)$. Assume $p_R = p_B = \alpha \in (0, 1)$. Then as $t \rightarrow \infty$*

$$\mathbb{P}_t \xrightarrow{\mathbf{w}} \bar{\pi} \delta_{\mathbf{R}} + (1 - \bar{\pi}) \delta_{\mathbf{B}}, \tag{4}$$

where $\bar{\pi}$ depends on the initial distribution \mathbb{P}_0 and as well as α .

The following corollary is also an immediate consequence

Corollary 4. *Assume $p_R = p_B = \alpha \in (0, 1)$ then for the Markov chain $(\xi_t)_{t \geq 0}$ the only translation invariant stationary measures are of the form*

$$\kappa \delta_{\mathbf{R}} + (1 - \kappa) \delta_{\mathbf{B}}$$

for some $0 \leq \kappa \leq 1$.

Here it is worthwhile to mention that it is unlikely that this chain has a stationary distribution which is not translation invariant, but we have not explored in that direction.

1.3 Outline

The rest of the paper is divided as follows. In Section 2 we prove Theorem 1. In Section 3 we consider a toy model on the half-line \mathbb{Z}_+ where a chameleon decides to change its colour according to its own toss and the colour and outcome of the toss of its neighbour to the right. This model is simpler to analyze and its usefulness is in providing an illustration of our method. In Section 4 we prove Theorem 2. Section 5 provides some auxiliary technical results which we use in various derivations. We end with some discussion on the *coexistence* of two colours in Section 6.

2 Red is More Successful than Blue

In this section we provide a simple proof of Theorem 1. We begin by placing only blue chameleons at each point of the negative half line and red chameleons on the non-negative half line, and we take this as our initial configuration, that is,

$$\xi_i(0) = \begin{cases} B & \text{for } i \leq -1 \\ R & \text{for } i \geq 0. \end{cases} \tag{5}$$

It is easy to see that, starting with $\xi(0)$ as given above there is always a sharp interface left of which all chameleons are blue and right of which all are red. Moreover if we write X_t as the position of the left most red chameleon at time $t \geq 0$ then $(X_t)_{t \geq 0}$ performs a symmetric random walk starting

from the origin with i.i.d. increments, each taking values $-1, 0$ and 1 with probabilities $p_R(1 - p_B)$, $p_R p_B + (1 - p_R)(1 - p_B)$ and $p_B(1 - p_R)$ respectively. This is because, for any $t \geq 0$ we have

$$X_{t+1} - X_t = \begin{cases} -1 & \text{if } C_B(X_t - 1, t) = 0 \text{ and } C_R(X_t, t) = 1 \\ 0 & \text{if } C_B(X_t - 1, t) = C_R(X_t, t) = 1 \text{ or} \\ & C_B(X_t - 1, t) = C_R(X_t, t) = 0 \\ +1 & \text{if } C_B(X_t - 1, t) = 1 \text{ and } C_R(X_t, t) = 0 \end{cases} \quad (6)$$

Now it is easy to check that if $p_R > p_B$, then $(X_t)_{t \geq 0}$ is a transient random walk with a strictly negative drift. In other words it proves that starting with the configuration given in (5)

$$\mathbb{P}_t \xrightarrow{w} \delta_{\mathbf{R}} \text{ as } t \rightarrow \infty.$$

2.1 Proof of Theorem 1

To complete the proof of Theorem 1, fix an $\eta > 0$ and let M be such that the random walk X_t satisfies

$$\mathbb{P}(X_t \leq M \text{ for all } t \geq 0) > 1 - \eta.$$

If the initial distribution of chameleons at time 0 is such that, for some $j \in \mathbb{Z}$

$$\xi_i(0) = \begin{cases} R & \text{for } j \leq i \leq j + 2M + 1 \\ B & \text{otherwise} \end{cases}$$

then,

$$\mathbb{P}(X_t^- \rightarrow -\infty \text{ and } X_t^+ \rightarrow \infty) \geq (1 - \eta)^2 \quad (7)$$

where we write X_t^- as the *left interface* and X_t^+ as the *right interface* at time $t \geq 0$.

Further an easy coupling argument shows that the above situation of a stretch of $2M + 2$ red chameleons flanked by only blue chameleons on either sides is “worse” than the case when the two ends instead of being all blue is actually a mixture of red and blue chameleons. More precisely, suppose the starting configuration ξ_0 is such that there exists a location $j \in \mathbb{Z}$ with $\xi_i(0) = R$ for all $j - M \leq i \leq j + M + 1$, then

$$\mathbb{P}(X_t^{-,j} \rightarrow -\infty \text{ and } X_t^{+,j} \rightarrow \infty) \geq (1 - \eta)^2 \quad (8)$$

where we write $X_t^{-,j}$ and $X_t^{+,j}$ are the positions of the leftmost and rightmost red chameleons at time $t \geq 0$ of the lounge of chameleons which started as the stretch of length $2M + 2$.

Let $J := \inf \left\{ j \geq 0 \mid \xi_i(0) = R \text{ for all } j - M \leq i \leq j + M + 1 \right\}$. When the initial distribution of the chameleons is i.i.d. then $\mathbb{P}(0 \leq J < \infty) = 1$. Thus, conditioning on $X_t^{-,J} \leq J - M$ and $X_t^{+,J} \geq J + M + 1$, the ensuing conditional independence of $X_t^{-,J}$ and $X_t^{+,J}$, yields

$$\mathbb{P}(X_t^{-,J} \rightarrow -\infty \text{ and } X_t^{+,J} \rightarrow \infty) \geq (1 - \eta)^2. \quad (9)$$

Now for any $k \geq 1$

$$\begin{aligned}
& \liminf_{t \rightarrow \infty} \mathbb{P}_t (\xi_i(t) = R \text{ for all } -k \leq i \leq k) \\
& \geq \liminf_{t \rightarrow \infty} \mathbb{P} (X_t^{-,J} < -k \text{ and } X_t^{+,J} > k) \\
& \geq \mathbb{P} (X_t^{-,J} < -k \text{ and } X_t^{+,J} > k \text{ eventually}) \\
& \geq \mathbb{P} (X_t^{-,J} \rightarrow -\infty \text{ and } X_t^{+,J} \rightarrow \infty) \\
& \geq (1 - \eta)^2,
\end{aligned}$$

where the last inequality follows from equation (9).

Finally since $\eta > 0$ is arbitrary we conclude that $\mathbb{P}_t \xrightarrow{w} \delta_{\mathbf{R}}$ as $t \rightarrow \infty$. \square

Remark: We observe that the above argument holds for any starting configuration $\xi(0)$ such that intervals of reds of arbitrary length can be found with probability one. This generalizes Theorem 1.

3 One Directional Neighbourhood Model

In this section we study the simpler *one directional neighbourhood model* where the dynamics follows our rule but with $N_i := \{i, i + 1\}$ for $i \in \mathbb{Z}$. The computations for this model are much simpler than the original *two sided neighbourhood model* and the method used here is illustrative of the method employed for the original two sided neighbourhood model. We now state the convergence result for the one directional neighbourhood model.

Theorem 5. *Let $\{\xi_i(0) : i \in \mathbb{Z}\}$ be random variables which are translation invariant and let $\mathbb{P}(\xi(0) = R) = p = 1 - \mathbb{P}(\xi_i(0) = B)$. Then for the one directional neighbourhood model with $p_R = p_B = \alpha \in (0, 1)$ we have*

$$\mathbb{P}_t \xrightarrow{w} p\delta_{\mathbf{R}} + (1 - p)\delta_{\mathbf{B}} \text{ as } t \rightarrow \infty. \quad (10)$$

Moreover the following corollary is now immediate.

Corollary 6. *For the one directional neighbourhood model with $p_R = p_B = \alpha \in (0, 1)$ the only translation invariant stationary measures are of the form*

$$\kappa\delta_{\mathbf{R}} + (1 - \kappa)\delta_{\mathbf{B}}$$

for some $0 \leq \kappa \leq 1$.

Before we prove this theorem we make the following observation which is very simple to prove but plays an important role in all our subsequent discussions.

Proposition 7. *Under the dynamics of the one directional neighbourhood model, if \mathbb{P}_0 is a translation invariant measure on $\{R, B\}^{\mathbb{Z}}$ then \mathbb{P}_t is also translation invariant for every $t \geq 0$.*

The proof of this Proposition follows from the Markov chain dynamics of the model and we omit the details. It is worth remarking here that a similar result is true for the two sided neighbourhood model.

3.1 Proof of Theorem 5

Before we embark on the proof of Theorem 5 we present some notation. From the translation invariance of \mathbb{P}_t as given by Proposition 7, for every $t \geq 0$, $k \geq 1$, $i \in \mathbb{Z}$ and $\omega_j \in \{R, B\}$ we observe that $\mathbb{P}_t(\xi_i(t) = \omega_1, \xi_{i+1}(t) = \omega_2, \dots, \xi_{i+k-1}(t) = \omega_k)$ does not depend on the location i ; thus with a slight abuse of notation we write

$$\mathbb{P}_t(\omega_1, \omega_2, \dots, \omega_k) := \mathbb{P}_t(\xi_i(t) = \omega_1, \xi_{i+1}(t) = \omega_2, \dots, \xi_{i+k-1}(t) = \omega_k).$$

Also

$$\mathbb{P}_t(\mathbf{RB}_k\mathbf{R}) := \mathbb{P}_t(\mathbf{RB} \dots \mathbf{BR})$$

where there are k many B 's in the expression on the right.

To prove this theorem we will use the technical result Theorem 9 given in Section 5.

Now fix $t \geq 0$. Observe

$$\begin{aligned} \mathbb{P}_{t+1}(R) &= \mathbb{P}_t(RR) + (\alpha + (1 - \alpha)^2) \mathbb{P}_t(RB) + \alpha(1 - \alpha) \mathbb{P}_t(BR) \\ &= \mathbb{P}_t(RR) + (\alpha + (1 - \alpha)^2 + \alpha(1 - \alpha)) \mathbb{P}_t(RB) \\ &= \mathbb{P}_t(RR) + \mathbb{P}_t(RB) \\ &= \mathbb{P}_t(R). \end{aligned} \tag{11}$$

The first equality follows from the dynamics rule. The second equality follows from the fact $\mathbb{P}_t(RB) = \mathbb{P}_t(R) - \mathbb{P}_t(RR) = \mathbb{P}_t(BR)$, which is a consequence of the translation invariance of \mathbb{P}_t .

Now for $t \geq 0$ using the rule of the dynamics we get

$$\begin{aligned} \mathbb{P}_{t+1}(RR) &= \mathbb{P}_t(RRR) + (\alpha + (1 - \alpha)^2) \mathbb{P}_t(RRB) \\ &\quad + \alpha(1 - \alpha) (\mathbb{P}_t(RBR) + \mathbb{P}_t(BRR) + \mathbb{P}_t(BRB)). \end{aligned} \tag{12}$$

On the other hand by translation invariance of \mathbb{P}_t we have

$$\mathbb{P}_t(RR) = \mathbb{P}_t(RRR) + \mathbb{P}_t(RRB). \tag{13}$$

Subtracting equation (13) from the equation (12) we get

$$\mathbb{P}_{t+1}(RR) - \mathbb{P}_t(RR) = \alpha(1 - \alpha) (\mathbb{P}_t(RBR) + \mathbb{P}_t(BRB)), \tag{14}$$

Here we use the fact that $\mathbb{P}_t(BRR) = \mathbb{P}_t(RR) - \mathbb{P}_t(RRR) = \mathbb{P}_t(RRB)$. So we conclude that

$$\mathbb{P}_t(RR) = \mathbb{P}_0(RR) + \alpha(1 - \alpha) \sum_{s=0}^{t-1} (\mathbb{P}_s(RBR) + \mathbb{P}_s(BRB)). \tag{15}$$

Since the summands above are non-negative and since $0 \leq \mathbb{P}_t(RR) \leq 1$ we have $\lim_{t \rightarrow \infty} \mathbb{P}_t(RR)$ exists. In addition, we have

$$\sum_{t=0}^{\infty} (\mathbb{P}_t(RBR) + \mathbb{P}_t(BRB)) < \infty.$$

So in particular

$$\lim_{t \rightarrow \infty} \mathbb{P}_t(RBR) = 0 = \lim_{t \rightarrow \infty} \mathbb{P}_t(BRB). \tag{16}$$

Finally observe that for any $k \geq 1$ we have

$$\begin{aligned} \alpha^{k+1}(1-\alpha)\mathbb{P}_t(\mathbf{BR}_k B) &\leq \mathbb{P}_{t+1}(\mathbf{BR}_{k-1} B) \text{ and} \\ \alpha^{k+1}(1-\alpha)\mathbb{P}_t(\mathbf{RB}_k R) &\leq \mathbb{P}_{t+1}(\mathbf{RB}_{k-1} R). \end{aligned} \tag{17}$$

Using (16) and (17) it follows by induction that

$$\lim_{t \rightarrow \infty} \mathbb{P}_t(\mathbf{RB}_k R) = 0 = \lim_{t \rightarrow \infty} \mathbb{P}_t(\mathbf{BR}_k B) \quad \forall k \geq 1. \tag{18}$$

Theorem 5 now follows from Theorem 9. \square

4 Proof of Theorem 2

In this section we prove our main result, namely, Theorem 2. But before we proceed we note that as remarked in the previous section, the following result is also true for our original model.

Proposition 8. *Under the dynamics of our original model with $p_R = p_B$, if \mathbb{P}_0 is a translation invariant measure on $\{R, B\}^{\mathbb{Z}}$ then \mathbb{P}_t is also translation invariant for every $t \geq 0$.*

Once again the proof is simple so we omit the details.

As in Section 3.1, Proposition 8 demonstrates the translation invariance of \mathbb{P}_t whenever \mathbb{P}_0 is translation invariant. The notation we use in this section are the same as those in Section 3.1.

4.1 Proof of The Convergence (3)

As in the previous section, here too we use the Theorem 9 to prove the convergence (3). For that we begin by checking that $\lim_{t \rightarrow \infty} \mathbb{P}_t(RR)$ exists. In order to prove this limit we use a technique similar to that in Section 3. The dynamics of the two sided neighbourhood model bring in some additional intricacies.

The following table presents some calculations which we use repeatedly. The column on the right is the probability of obtaining a configuration RR at locations $(i, i + 1)$ of \mathbb{Z} at time $(t + 1)$ when the configuration at time t at locations $(i - 1, i, i + 1, i + 2)$ is given by the column on the left.

Configuration at time t	Probability of getting a configuration RR at time $t + 1$
$RRRR$	1
$BRRR$	$\alpha + (1 - \alpha)^2$
$RRRB$	$\alpha + (1 - \alpha)^2$
$BRRB$	$\alpha^2 + 2\alpha(1 - \alpha)^2 + (1 - \alpha)^4$
$RRBR$	$\alpha(1 - \alpha)(2 - \alpha)$
$BRBR$	$\alpha(1 - \alpha)(1 + (1 - \alpha)^2)$
$RRBB$	$\alpha(1 - \alpha)$
$BRBB$	$\alpha(1 - \alpha)$
$RBRR$	$\alpha(1 - \alpha)(2 - \alpha)$
$BBRR$	$\alpha(1 - \alpha)$
$RBRB$	$\alpha(1 - \alpha)(1 + (1 - \alpha)^2)$
$BBRB$	$\alpha(1 - \alpha)$
$RBBR$	$\alpha^2(1 - \alpha)^2$
$BBBR$	0
$RBBB$	0
$BBBB$	0

Combining we get

$$\begin{aligned}
\mathbb{P}_{t+1}(RR) = & \mathbb{P}_t(RRRR) + (\alpha + (1 - \alpha)^2) (\mathbb{P}_t(BRRR) + \mathbb{P}_t(RRRB)) \\
& + (\alpha^2 + 2\alpha(1 - \alpha)^2 + (1 - \alpha)^4) \mathbb{P}_t(BRRB) \\
& + \alpha(1 - \alpha)(2 - \alpha) (\mathbb{P}_t(RRBR) + \mathbb{P}_t(RBRR)) \\
& + \alpha(1 - \alpha) (\mathbb{P}_t(RRBB) + \mathbb{P}_t(BRBB) + \mathbb{P}_t(BBRR) + \mathbb{P}_t(BBRB)) \\
& + \alpha^2(1 - \alpha)^2 \mathbb{P}_t(RBBR) \\
& + \alpha(1 - \alpha)(1 + (1 - \alpha)^2) (\mathbb{P}_t(BRBR) + \mathbb{P}_t(RBRB)). \tag{19}
\end{aligned}$$

Also by translation invariance of \mathbb{P}_t it also follows that

$$\mathbb{P}_t(RR) = \mathbb{P}_t(RRRR) + \mathbb{P}_t(RRRB) + \mathbb{P}_t(BRRR) + \mathbb{P}_t(BRRB). \tag{20}$$

Now subtracting equation (20) from equation (19) we get

$$\begin{aligned}
& \mathbb{P}_{t+1}(RR) - \mathbb{P}_t(RR) \\
&= (\alpha + (1 - \alpha)^2 - 1) \left(\mathbb{P}_t(BRRR) + \mathbb{P}_t(RRRB) \right) \\
&\quad + (\alpha^2 + 2\alpha(1 - \alpha)^2 + (1 - \alpha)^4 - 1) \mathbb{P}_t(BRRB) \\
&\quad + \alpha(1 - \alpha)(2 - \alpha) \left(\mathbb{P}_t(RRBR) + \mathbb{P}_t(RBRR) \right) \\
&\quad + \alpha(1 - \alpha) \left(\mathbb{P}_t(RRBB) + \mathbb{P}_t(BRBB) + \mathbb{P}_t(BBRR) + \mathbb{P}_t(BBRB) \right) \\
&\quad + \alpha^2(1 - \alpha)^2 \mathbb{P}_t(RBBR) \\
&\quad + \alpha(1 - \alpha) \left(1 + (1 - \alpha)^2 \right) \left(\mathbb{P}_t(BRBR) + \mathbb{P}_t(RBRB) \right) \\
&= \alpha(1 - \alpha) \left[- \left(\mathbb{P}_t(RRRB) + \mathbb{P}_t(BRRB) + \mathbb{P}_t(BRRR) + \mathbb{P}_t(BRRB) \right) \right. \\
&\quad + \alpha(1 - \alpha) \left(\mathbb{P}_t(BRRB) + \mathbb{P}_t(RBBR) \right) \\
&\quad + (1 - \alpha) \left(\mathbb{P}_t(RRBR) + \mathbb{P}_t(RBRR) \right) \\
&\quad + \left(1 + (1 - \alpha)^2 \right) \left(\mathbb{P}_t(BRBR) + \mathbb{P}_t(RBRB) \right) \\
&\quad + \left(\mathbb{P}_t(BRBB) + \mathbb{P}_t(RBRR) \right) \\
&\quad \left. + \left(\mathbb{P}_t(RRBB) + \mathbb{P}_t(RRBR) + \mathbb{P}_t(BBRR) + \mathbb{P}_t(BBRB) \right) \right] \\
&= \alpha(1 - \alpha) \left[\alpha(1 - \alpha) \left(\mathbb{P}_t(BRRB) + \mathbb{P}_t(RBBR) \right) \right. \\
&\quad + (1 - \alpha) \left(\mathbb{P}_t(RRBR) + \mathbb{P}_t(RBRR) \right) \\
&\quad + \left(1 + (1 - \alpha)^2 \right) \left(\mathbb{P}_t(BRBR) + \mathbb{P}_t(RBRB) \right) \\
&\quad \left. + \left(\mathbb{P}_t(BRBB) + \mathbb{P}_t(BBRB) \right) \right]. \tag{21}
\end{aligned}$$

In the above equations the second equality holds because of the following two easy algebraic identities:

$$\begin{aligned}
& \alpha + (1 - \alpha)^2 - 1 = -\alpha(1 - \alpha) \text{ and} \\
& \alpha^2 + 2\alpha(1 - \alpha)^2 + (1 - \alpha)^4 - 1 = \alpha(1 - \alpha)(\alpha(1 - \alpha) - 2),
\end{aligned}$$

and the last equality is obtained from the following relations:

$$\begin{aligned}
& \mathbb{P}_t(RRB) = \mathbb{P}_t(RRBB) + \mathbb{P}_t(RRBR) = \mathbb{P}_t(RRRB) + \mathbb{P}_t(BRRB), \\
& \mathbb{P}_t(BBR) = \mathbb{P}_t(BBRR) + \mathbb{P}_t(RBRR) = \mathbb{P}_t(BRRR) + \mathbb{P}_t(BBRB).
\end{aligned}$$

Since each of the terms in the last equality of (21) are non-negative so we conclude that $\{\mathbb{P}_t(RR)\}_{t \geq 1}$ is an increasing sequence and hence converges. Thus $\mathbb{P}_{t+1}(RR) - \mathbb{P}_t(RR) \rightarrow 0$ as $t \rightarrow \infty$. So each of the following eight probabilities converge to 0 as $t \rightarrow \infty$.

$$\mathbb{P}_t(BRRB), \mathbb{P}_t(RBBR), \mathbb{P}_t(RRBR), \mathbb{P}_t(RBRR),$$

$$\mathbb{P}_t(BRBR), \mathbb{P}_t(RBRB), \mathbb{P}_t(BRBB), \mathbb{P}_t(BBRB). \quad (22)$$

It then follows that

$$\mathbb{P}_t(RBR) = \mathbb{P}_t(RBRR) + \mathbb{P}_t(RBRB) \rightarrow 0, \quad (23)$$

$$\mathbb{P}_t(BRB) = \mathbb{P}_t(BRBR) + \mathbb{P}_t(BRBB) \rightarrow 0. \quad (24)$$

Now observe that for any $k \geq 1$ we have

$$\begin{aligned} \alpha^{k+1}(1-\alpha)\mathbb{P}_t(\mathbf{BR}_k B) &\leq \mathbb{P}_{t+1}(\mathbf{BR}_{k-1} B) \text{ and} \\ \alpha^{k+1}(1-\alpha)\mathbb{P}_t(\mathbf{RB}_k R) &\leq \mathbb{P}_{t+1}(\mathbf{RB}_{k-1} R). \end{aligned} \quad (25)$$

So by induction

$$\lim_{t \rightarrow \infty} \mathbb{P}_{t+1}(\mathbf{BR}_k B) = 0 = \lim_{t \rightarrow \infty} \mathbb{P}_{t+1}(\mathbf{RB}_k R) \quad (26)$$

for any $k \geq 1$.

Finally, we consider the one dimensional marginal and observe

$$\begin{aligned} \mathbb{P}_{t+1}(R) &= \mathbb{P}_t(RRR) + (\alpha + (1-\alpha)^2) (\mathbb{P}_t(RRB) + \mathbb{P}_t(BRR)) \\ &\quad + (\alpha + (1-\alpha)^3) \mathbb{P}_t(BRB) \\ &\quad + \alpha(1-\alpha) (\mathbb{P}_t(BBR) + \mathbb{P}_t(RBB)) \\ &\quad + (1-\alpha) (1 - (1-\alpha)^2) \mathbb{P}_t(RBR). \end{aligned} \quad (27)$$

Also from translation invariance of \mathbb{P}_t it follows that

$$\mathbb{P}_t(R) = \mathbb{P}_t(RRR) + \mathbb{P}_t(RRB) + \mathbb{P}_t(BRR) + \mathbb{P}_t(BRB). \quad (28)$$

Subtracting equation (28) from equation (27) we have

$$\mathbb{P}_{t+1}(R) - \mathbb{P}_t(R) = \alpha^2(1-\alpha) (\mathbb{P}_t(BRB) - \mathbb{P}_t(RBR)). \quad (29)$$

To derive this final expression we used the following identities which are easy consequences of translation invariance of \mathbb{P}_t .

$$\mathbb{P}_t(BBR) - \mathbb{P}_t(BRR) = \mathbb{P}_t(BRB) - \mathbb{P}_t(RBR) = \mathbb{P}_t(RBB) - \mathbb{P}_t(RRB).$$

Now from equation (21) we get that all the eight probabilities given in (22) are summable. In fact we can write

$$\begin{aligned} \mathbb{P}_{t+1}(RR) - \mathbb{P}_0(RR) &= \alpha(1-\alpha) \left[\alpha(1-\alpha) \sum_{n=0}^t (\mathbb{P}_n(BRRB) + \mathbb{P}_n(RBBR)) \right. \\ &\quad + (1-\alpha) \sum_{n=0}^t (\mathbb{P}_n(RRBR) + \mathbb{P}_n(RBRR)) \\ &\quad + (1 + (1-\alpha)^2) \sum_{n=0}^t (\mathbb{P}_n(BRBR) + \mathbb{P}_n(RBRB)) \\ &\quad \left. + \sum_{n=0}^t (\mathbb{P}_n(BRBB) + \mathbb{P}_n(BBRB)) \right]. \end{aligned} \quad (30)$$

It then follows that the two sequences $\mathbb{P}_t(RBR) = \mathbb{P}_t(RBRR) + \mathbb{P}_t(RBRB)$ and $\mathbb{P}_t(BRB) = \mathbb{P}_t(BRBR) + \mathbb{P}_t(BRBB)$ are also summable. In particular they converge to 0. This proves that $\lim_{t \rightarrow \infty} \mathbb{P}_t(R)$ exists.

Invoking Theorem 9 we now complete the proof of the convergence (3).

We also note that so far we have only used the fact that the starting distribution is translation invariant. Thus as mentioned in the introduction this in fact proves Theorem 3 as well.

4.2 Proof of the Properties of $\pi(\alpha, p)$

First, from the definition it follows that $\pi(\alpha, p) = \lim_{t \rightarrow \infty} \mathbb{P}_t(RR)$; thus using equation (30) we get

$$\begin{aligned} \pi(\alpha, p) &= p^2 + \alpha(1 - \alpha) \left[\alpha(1 - \alpha) \sum_{t=0}^{\infty} (\mathbb{P}_t(BRRB) + \mathbb{P}_t(RBBR)) \right. \\ &\quad + (1 - \alpha) \sum_{t=0}^{\infty} (\mathbb{P}_t(RRBR) + \mathbb{P}_t(RBRR)) \\ &\quad + (1 + (1 - \alpha)^2) \sum_{t=0}^{\infty} (\mathbb{P}_t(BRBR) + \mathbb{P}_t(RBRB)) \\ &\quad \left. + \sum_{t=0}^{\infty} (\mathbb{P}_t(BRBB) + \mathbb{P}_t(BBRB)) \right]. \end{aligned} \quad (31)$$

This immediately proves that $\pi(\alpha, p) > p^2$ for any $p \in (0, 1)$. Moreover because the model is symmetric with respect to colour we have

$$\pi(\alpha, p) = 1 - \pi(\alpha, 1 - p). \quad (32)$$

This proves that

$$p^2 < \pi(\alpha, p) < 2p - p^2$$

as well as $\pi(\alpha, \frac{1}{2}) = \frac{1}{2}$. Thus properties (ii) and (iii) of π hold.

Moreover from the expression (31) it follows that for every fixed $\alpha \in (0, 1)$ the limiting marginal π as a function of p is an increasing limit of polynomials in p . This implies that $p \mapsto \pi(\alpha, p)$ is *lower semi-continuous* [11]. But because of the identity (32) for the same reason it is also *upper semi-continuous*. This proves that that π as a function of p is continuous, establishing the property (i).

Finally, we show property (iv). For this fix $\alpha \in (0, 1)$ and notice that from the expression (31), since all the summands are non-negative, we have

$$\frac{\pi(\alpha, p)}{p} \geq \frac{1}{p} \alpha(1 - \alpha) \sum_{t=0}^{\infty} (\mathbb{P}_t(BRBB) + \mathbb{P}_t(BBRB)). \quad (33)$$

Now fix $t \geq 0$ and consider the probability $\mathbb{P}_t(BRBB)$. Because of translation invariance, without loss of any generality, we may assume that the configuration we are considering is at the locations $-1, 0, 1, 2$. Now notice that because the dynamics depends only on the nearest neighbours so

$\mathbb{P}_t(BRBB)$ depends on the initial configuration at the locations in the interval $[-t-1, t+2]$. So without loss of generality we may assume that outside the interval $[-t-1, t+2]$, at every location the colour of the chameleons are blue (B). So we may write

$$\mathbb{P}_t(BRBB) = p(1-p)^{2t+3} p_{11}^{(t)}(\alpha) + o(p^2) \quad (34)$$

where the terms in $o(p^2)$ are all non-negative and $p_{11}^{(t)}(\alpha)$ is the sum over all locations $x \in [-t-1, t+2]$ of the probability of obtaining exactly one red (R) chameleon at location 0 at time t having started at time 0 with exactly one red (R) chameleon at location x . Observe also that $\mathbb{P}_t(BBRB)$ has exactly the same representation as $\mathbb{P}_t(BRBB)$.

Now let us consider the case when we start with exactly one R chameleon at some location $x \in \mathbb{Z}$ and all other chameleon of colour blue (B). For this let L_t be the number of red chameleons at time t and X_t be the position of the leftmost red chameleon at time t . These two quantities are well defined for our Markov chain. Thus we get

$$\begin{aligned} p_{11}^{(t)} &= \sum_{x=-t-1}^{t+2} \mathbf{P}\left(L_t = 1, X_t = 0 \mid L_0 = 1, X_0 = x\right) \\ &= \sum_{x=-t-1}^{t+2} \mathbf{P}\left(L_t = 1, X_t = -x \mid L_0 = 1, X_0 = 0\right) \\ &= \mathbf{P}\left(L_t = 1 \mid L_0 = 1, X_0 = 0\right) \end{aligned} \quad (35)$$

where the second equality follows because of the translation invariance of the measure while the last follows because if $X_0 = 0$ then $X_t \in [-t, t]$ with probability one.

Now it follows easily that starting with exactly one R chameleon at the origin the stochastic process $(L_t)_{t=0}^{\infty}$ is a Markov chain with state-space $\{0, 1, 2, \dots\}$ starting at $L_0 = 1$ and with absorbing state 0. The transition matrix $P := ((p_{ij}))$ is given by

$$p_{ij} = \begin{cases} 2\alpha(1-\alpha)^2 + \alpha^2(1-\alpha) & \text{if } i = 1, j = 0 \\ 1 - 3\alpha(1-\alpha) & \text{if } i = 1, j = 1 \\ 2\alpha^2(1-\alpha) & \text{if } i = 1, j = 2 \\ \alpha(1-\alpha)^2 & \text{if } i = 1, j = 3 \\ \mathbf{P}(Z_1 + Z_2 = j - i) & \text{if } i \geq 2 \\ 0 & \text{otherwise} \end{cases} \quad (36)$$

where Z_1, Z_2 are i.i.d. random variables with $\mathbf{P}(Z_1 = -1) = \mathbf{P}(Z_1 = 1) = \alpha(1-\alpha)$ and $\mathbf{P}(Z_1 = 0) = 1 - 2\alpha(1-\alpha)$.

Now using equations (33), (34) it follows that

$$\begin{aligned} \liminf_{p \rightarrow 0} \frac{\pi(\alpha, p)}{p} &\geq 2\alpha(1-\alpha) \liminf_{p \rightarrow 0} \sum_{t=0}^{\infty} (1-p)^{2t+3} p_{11}^{(t)} \\ &\geq 2\alpha(1-\alpha) \sum_{t=0}^{\infty} p_{11}^{(t)} \\ &\geq 1. \end{aligned}$$

Here we note that the second inequality follows from Fatou's Lemma and, noting that $\sum_{t=0}^{\infty} p_{11}^{(t)} = \mathbf{E} \left[\# \text{ of returns to state } 1 \mid L_0 = 1 \right]$, the last inequality follows from Theorem 10 of Section 5.

This completes the proof of Theorem 2. \square

5 Some Technical Results

In this section we prove some technical results which have been used in the proofs in the previous sections.

Theorem 9. *Let $(\mathbb{P}_t)_{t \geq 0}$ be a sequence of translation invariant measures on $\{R, B\}^{\mathbb{Z}}$ such that the following conditions hold*

(i) $\lim_{t \rightarrow \infty} \mathbb{P}_t(R)$ exists,

(ii) $\lim_{t \rightarrow \infty} \mathbb{P}_t(RR)$ exists, and

(iii) for all $k \geq 1$ $\lim_{t \rightarrow \infty} \mathbb{P}_t(BR_k B) = 0 = \lim_{t \rightarrow \infty} \mathbb{P}_t(RB_k R)$,

then

$$\mathbb{P}_t \xrightarrow{w} a\delta_R + (1-a)\delta_B \text{ as } t \rightarrow \infty, \quad (37)$$

where $a := \lim_{t \rightarrow \infty} \mathbb{P}_t(R)$.

Proof. Let $a := \lim_{t \rightarrow \infty} \mathbb{P}_t(R)$ and $b := \lim_{t \rightarrow \infty} \mathbb{P}_t(RR)$. To prove the result it is enough to show that $a = b$. This is because then $\mathbb{P}_t(RB) = \mathbb{P}_t(BR) = \mathbb{P}_t(RR) - \mathbb{P}_t(R) \rightarrow 0$ as $t \rightarrow \infty$.

Now to show $a = b$ we first observe that

$$\mathbb{P}_t(RB) = \mathbb{P}_t(R) - \mathbb{P}_t(RR) \rightarrow a - b.$$

Now for $k \geq 1$,

$$\mathbb{P}_t(\mathbf{R}_{k+1}B) = \mathbb{P}_t(\mathbf{R}_k B) - \mathbb{P}_t(BR_k B).$$

Thus under assumption (iii) it follows by induction that

$$\mathbb{P}_t(\mathbf{R}_k B) \rightarrow a - b. \quad (38)$$

Also for any $k \geq 1$ we have

$$\mathbb{P}_t(\mathbf{R}_{k+1}) = \mathbb{P}_t(\mathbf{R}_k) - \mathbb{P}_t(\mathbf{R}_k B).$$

Thus it follows by induction that

$$\mathbb{P}_t(\mathbf{R}_k) \rightarrow (k-1)b - (k-2)a. \quad (39)$$

From equation (38) and (39) it follows that

$$b \leq a \leq \frac{k-1}{k-2}b \text{ for all } k \geq 3. \quad (40)$$

This proves that $a = b$ completing the proof. \square

Theorem 10. Let $(L_t)_{t \geq 0}$ be a Markov chain on the state-space $\{0, 1, 2, \dots\}$ with transition matrix $P = ((p_{ij}))$ as given in (36) and $L_0 = 1$. Then

$$\mathbf{E} \left[\# \text{ of returns to the state } 1 \mid L_0 = 1 \right] > \frac{1}{2\alpha(1-\alpha)}. \quad (41)$$

Proof. Let $f_{11}^* := \mathbf{P} \left(L_t = 1 \text{ for some } t \geq 1 \mid L_0 = 1 \right)$ then from standard Markov chain theory [7] it follows that

$$\mathbf{E} \left[\# \text{ of returns to the state } 1 \mid L_0 = 1 \right] = \frac{1}{1-f_{11}^*}. \quad (42)$$

Moreover we can also write,

$$f_{11}^* = p_{11} + p_{12}f_{21}^* + p_{13}f_{31}^*, \quad (43)$$

where $f_{k1}^* := \mathbf{P} \left(L_t = 1 \text{ for some } t \geq 1 \mid L_0 = k \right)$ for $k \in \{2, 3\}$.

Now let $((\bar{p}_{ij}))$ be the transition matrix of a new Markov chain on the same state-space $\{0, 1, 2, \dots\}$ such that both 0 and 1 are absorbing states and $\bar{p}_{ij} = p_{ij}$ for all $i \geq 2$. Let u_k be the probability of getting absorbed in the state 1 for this new chain when started at state k . Then it is easy to see that $f_{k1}^* = u_k$ for any $k \geq 2$.

From definition $u_0 = 0$ and $u_1 = 1$. Moreover it is easy to see that

$$u_k = \beta_2 (u_{k-2} + u_{k+2}) + \beta_1 (u_{k-1} + u_{k+1}) + \beta_0 u_k, \quad (44)$$

where $\beta_2 = \theta^2$, $\beta_1 = 2\theta(1-2\theta)$ and $\beta_0 = 1 - \beta_1 - \beta_2$ and $\theta := \alpha(1-\alpha)$. The characteristic equation of this difference equation is given by

$$\lambda^2 = \beta_2 (\lambda^4 + 1) + \beta_1 (\lambda^3 + \lambda) + \beta_0 \lambda^2. \quad (45)$$

It then follows easily that this has three real roots, $\gamma_0 = 1$ with multiplicity 2 and $-\gamma_1$ and $-\gamma_2$ such that $\gamma_2 > 1 > \gamma_1 > 0$. So a general solution of (44) is given by

$$u_k = C_1 + C_2 k + C_3 (-\gamma_1)^k + C_4 (-\gamma_2)^k. \quad (46)$$

But our u_k 's are probability and hence are in $[0, 1]$, so we must have $C_2 = C_4 = 0$. But because of the initial conditions $u_0 = 0$ and $u_1 = 1$ it follows that

$$u_k = \frac{1}{1+\gamma_1} - \frac{(-\gamma_1)^k}{1+\gamma_1}. \quad (47)$$

In particular

$$u_2 = 1 - \gamma_1 \text{ and } u_3 = 1 - \gamma_1 + \gamma_1^2. \quad (48)$$

Going back to the characteristic equation (45) we determine that

$$1 - \gamma_1 = h(\theta), \quad (49)$$

where

$$h(\theta) = \frac{\sqrt{1-2\theta} - (1-2\theta)}{\theta}. \quad (50)$$

Now to complete the proof we need to show that

$$f_{11}^* > 1 - 2\alpha(1 - \alpha)$$

which is equivalent to showing

$$h(\theta)(3\alpha - 1) - \alpha + (1 - \alpha)(h(\theta))^2 > 0$$

where $\theta = \alpha(1 - \alpha)$ and h is as defined in (50).

The rest of the proof is simple calculus and some exact calculations; for completeness we provide the essential details. From the definition of h one can show easily by Taylor expansion that

$$1 - h(\theta) \leq \frac{\theta}{2} + c\theta^2, \quad (51)$$

where $c = 2.18$. Also it is not difficult to show that

$$h(\theta) \geq 2(\sqrt{2} - 1) > 0.8, \quad (52)$$

here we note that $\theta = \alpha(1 - \alpha) \in \left[0, \frac{1}{4}\right]$.

Finally,

$$\begin{aligned} & h(\theta)(3\alpha - 1) - \alpha + (1 - \alpha)(h(\theta))^2 \\ &= \alpha(2h(\theta) - 1) - (1 - \alpha)h(\theta)(1 - h(\theta)) \\ &\geq \alpha(2h(\theta) - 1) - (1 - \alpha)h(\theta)\theta\left(\frac{1}{2} + c\theta\right) \\ &= \alpha\left\{h(\theta)\left(2 - (1 - \alpha)^2\left(\frac{1}{2} + c\theta\right)\right) - 1\right\} \\ &\geq \alpha\left\{h(\theta)\left(2 - \frac{1}{2} - c\alpha(1 - \alpha)^3\right) - 1\right\} \\ &\geq \alpha\left\{0.8\left(\frac{3}{2} - 2.18 * \frac{27}{256}\right) - 1\right\} \\ &\geq \alpha(1.01 - 1) \\ &> 0. \end{aligned}$$

Here we use the fact that $\alpha(1 - \alpha)^3 \leq \frac{27}{256}$. This completes the proof. \square

6 Coexistence of the Two Colours

We observe that in our model even in the symmetric case only one of the colours survives at the limit provided we start with a translation invariant distribution. In this case it is also easy to see that if we start with all blue chameleons on the negative integers and all red chameleons at the non-negative integer locations then at the limit with probability 1/2 we have the all red configuration and with probability 1/2 the all blue configuration. So once again there is no coexistence. This is because in this case the interface between the blue and red chameleons will perform a discrete time symmetric random walk with holding and hence the result will follow from standard local limit theorem.

It is possible though to get coexistence of the two colours by making the success probability α inhomogeneous, that is to depend on time. Suppose that α_t is the probability of success of the coin toss of any colour at time t and we start with a configuration of all blue chameleons on the

negative integers while all red chameleons at the non-negative integers. Let X_t be the position of the left-most red chameleon. Then it is easy to see that $X_t := Y_1 + Y_2 + \dots + Y_t$ where $(Y_i)_{i \geq 1}$ are independent and Y_i follows a distribution on $\{-1, 0, 1\}$ with $\mathbf{P}(Y_i = -1) = \mathbf{P}(Y_i = 1) = \alpha_i(1 - \alpha_i)$ and $\mathbf{P}(Y_i = 0) = 1 - 2\alpha_i(1 - \alpha_i)$. So by Kolmogorov's Three Series Theorem [4] the sequence of random variables $(X_t)_{t=0}^\infty$ converges a.s. if and only if

$$\sum_{t=1}^{\infty} \alpha_t (1 - \alpha_t) < \infty \quad (53)$$

Thus if (53) is satisfied then there will be both colours present at the limit.

This is intuitively clear since under the condition (53) for large enough t one of α_t or $(1 - \alpha_t)$ is "small" and hence there will either be a large number of failures or large number of successes of the coin tosses, and in either case, no change is expected.

It is of course more interesting to study this symmetric model on higher dimensions with homogeneous success probability and to explore the possibility of coexistence in that case. Unfortunately our method does not help in that case. In fact in higher dimension it is not even clear a condition like $p_R > p_B$ is good enough to get all red configuration at the limit.

Acknowledgement

The authors would like to thank Kalyan Chatterjee and Debraj Ray for useful discussions.

References

- [1] V. Bala and S. Goyal. Learning from Neighbors. *Rev. Econ. Stud.*, 65:595–621, 1998.
- [2] V. Bala and S. Goyal. A Noncooperative Model of Network Formation. *Econometrica*, 68(5):1181–1229, 2000. MR1779147
- [3] Abhijit Banerjee and Drew Fudenberg. Word-of-mouth learning. *Games and Economic Behavior*, 46(1):1–21, 2004. MR2027498
- [4] Patrick Billingsley. *Probability and measure*. Wiley Series in Probability and Mathematical Statistics. John Wiley & Sons Inc., New York, third edition, 1995. MR1324786
- [5] Kalyan Chatterjee and Susan H. Xu. Technology diffusion by learning from neighbours. *Adv. in Appl. Probab.*, 36(2):355–376, 2004. MR2058140
- [6] Glenn Ellison and Drew Fudenberg. Rules of Thumb for Social Learning. *J. Political Economy*, 101(4):612–643, 1993.
- [7] William Feller. *An introduction to probability theory and its applications. Vol. II*. Second edition. John Wiley & Sons Inc., New York, 1971. MR0270403
- [8] Hans-Otto Georgii. *Gibbs measures and phase transitions*, volume 9 of *de Gruyter Studies in Mathematics*. Walter de Gruyter & Co., Berlin, 1988. MR0956646

- [9] Geoffrey Grimmett. *Percolation*, volume 321 of *Grundlehren der Mathematischen Wissenschaften [Fundamental Principles of Mathematical Sciences]*. Springer-Verlag, Berlin, second edition, 1999. MR1707339
- [10] Thomas M. Liggett. *Interacting particle systems*. Classics in Mathematics. Springer-Verlag, Berlin, 2005. Reprint of the 1985 original. MR2108619
- [11] Walter Rudin. *Real and complex analysis*. McGraw-Hill Book Co., New York, third edition, 1987. MR0924157